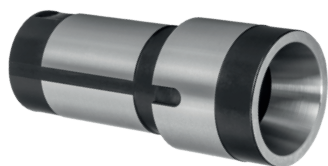


**Druckhülsen und Spannmittel**
**Collet Sleeves and clamping tools**

**Hauptspindel - Main-Spindle**

| Druckhülse - Bestell-Nr.<br>collet sleeve - order-no.                        | f. britsch | Spannzange<br>Collet  | f. britsch | Führungsbüchse<br>Guide Bush |
|--|------------|---|------------|------------------------------|
| <b>Standard <u>Standard</u></b>  |            |   |            |                              |
| <b>P0-38850</b>  |            | E 120 F15 76-580  |            | I 353 / 8.001 / J6R          |
| <b>VP0-38850</b><br>(verstiftet 3 mm am Konus / <i>pinned 3 mm in Cone</i> ) |            | E 120 F15 76-580<br>(Nut 3 mm im Konus / <i>Slot 3 mm in Cone</i> ) |            | I 353 / 8.001 / J6R          |
| <b>Erweiterung <u>Expansion</u></b>  |            |   |            |                              |
| Auf Anfrage / <i>On Request</i>  |            |   |            |                              |
| <b>Reduzierung <u>Reduction</u></b>  |            |   |            |                              |
| Auf Anfrage / <i>On Request</i>  |            |   |            |                              |

**Gegenspindel - Sub-Spindle**

| Druckhülse - Bestell-Nr.<br>collet sleeve - order-no.                        | f. britsch | Spannzange<br>Collet   | - |
|--|------------|--|---|
| <b>Standard <u>Standard</u></b>  |            |  |   |
| <b>P0-40140</b>  |            | E 120 F15 76-580   | - |
| <b>VP0-40140</b><br>(verstiftet 3 mm am Konus / <i>pinned 3 mm in Cone</i> ) |            | E 120 F15 76-580<br>(Nut 3 mm im Konus / <i>Slot 3 mm in Cone</i> )  | - |
| <b>Reduzierung <u>Reduction</u></b>  |            | <b>ACHTUNG! Auswerfer muss eventuell angepasst werden!</b><br><i>ATTENTION! In case of using a sleeve reduction, it is urgent to fit your ejector!</i> |   |
| Auf Anfrage / <i>On Request</i>  |            |  |   |
| <b>Erweiterung <u>Expansion</u></b>  |            |  |   |
| Auf Anfrage / <i>On Request</i>  |            |  |   |

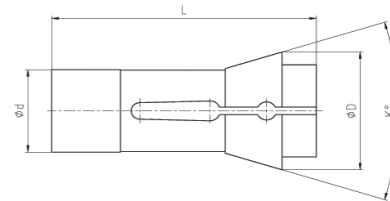
Sie dürfen uns im Zweifelsfall jederzeit kontaktieren.

Wir beraten Sie gerne bezüglich Ihrer Spannmittel für Ihre  Maschine

*Please do not hesitate to contact us  
if you have any questions regarding your clamping tools for your  machine.*

## Druckspannzangen Reihe 100

## Dead Length Collets Series 100 / F-Type

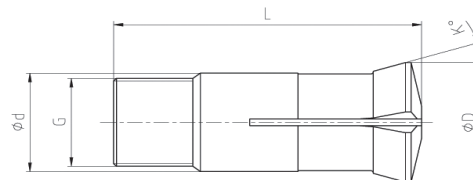
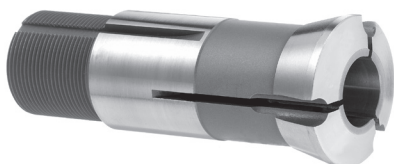


| Bestell-Nr.<br>order-no. | F-Nummer<br>F-Number | US-Code      | Ø d       | Ø D       | L         | K          | Maximale Bohrung in mm<br>Maximum Bore in mm |             |            |
|--------------------------|----------------------|--------------|-----------|-----------|-----------|------------|--|-------------|------------|
|                          |                      |              |           |           |           |            | Ø  | 6-kt        | 4-kt       |
| 101 E                    | F8 76-577            | TF 8         | 8         | 12        | 42        | 32°        | 6,35   | -           | -          |
| 109 E                    | F10 76-86            | TF 10        | 10        | 15,5      | 47,5      | 40°        | 8,0  | 7,0         | 5,5        |
| <b>120 E Standard</b>    | <b>F15 76-580</b>    | <b>TF 15</b> | <b>15</b> | <b>21</b> | <b>64</b> | <b>32°</b> | <b>13,0</b>                                  | <b>11,0</b> | <b>9,0</b> |
| EF16 / 1212E             | F16 76-1076          | TF 16        | 16        | 21        | 64        | 32°        | 13,0   | 10,0        | 8,0        |
| 138 E                    | F20 76-87            | TF 20        | 20        | 28        | 67        | 32°        | 16,0   | 14,0        | 11,0       |
| 145 E                    | F25 76-64            | TF 25        | 25        | 35        | 77        | 32°        | 21,0   | 17,0        | 14,0       |
| 147 E                    | F27 76-22            | TF 27        | 27        | 38        | 72,7      | 30°        | 23,0   | 20,0        | 16,0       |
| EF37 / 1536E             | F37 76-740           | TF 37        | 37        | 47        | 92        | 32°        | 32,0   | 27,0        | 22,0       |
| EF40                     | F40                  | EF 40        | 40        | 47        | 92        | 32°        | 36,0   | -           | -          |
| 171 E                    | F42 76-99            |              | 42        | 55        | 94        | 30°        | 37,0   | 32,0        | 26,0       |
| 173 E                    | F48 76-81            | TF 48        | 48        | 60        | 94        | 30°        | 42,0   | 38,0        | 30,0       |

Weitere Spannzangentypen, Sonderdruckspannzangen und Sonderprofile auch mit Vorbau kurzfristig lieferbar!  
Further types of Collets, special Collets with customized Profiles also with extended nose quickly available!

## Verstellbare Führungsbüchsen mit Hartmetall Einsatz

## Adjustable Guide bushes with carbide insert



| Bestell-Nr.<br>order-no. | Schweizer Code<br>Swiss Code                                 | US-Code     | Ø d       | Ø D         | Gewinde<br>Thread | L         | K          | Maximale Bohrung<br>in mm<br>Maximum Bore in<br>mm |
|--------------------------|--|-------------|-----------|-------------|-------------------|-----------|------------|--|
| <b>I 353 Standard</b>    | <b>T16-59 / 8.001 / J6R</b>                                  | <b>TD10</b> | <b>16</b> | <b>20,5</b> | <b>M 14 x 1</b>   | <b>59</b> | <b>16°</b> | <b>1,0 - 12,0</b>                                  |
| F 853                    | T18-59-M16.1 / 166.001 / B212A                               |             | 18        | 21,8        | M 16 x 1          | 59        | 30°        | 1,0 - 13,0   |
| F 391                    | T22-68-M22.1 / 39.001 / J7AR                                 | TD20R       | 22        | 29          | M 22 x 1          | 68        | 16°        | 3,0 - 18,0   |
| T 223                    | T28-82-M25.1 / 22.001 / B261                                 | TD25S       | 28        | 34          | M 25 x 1          | 82        | 16°        | 3,0 - 21,0   |
| T 223S                   | T28-82-M27.1 / 22.010 /<br>erw. Durchlass /spindle expansion |             | 28        | 34          | M 27 x 1          | 82        | 16°        | 21,0 - 23,0  |
| T 229                    | T42-82-C16 / 28.001 / J9                                     | TD32S       | 42        | 49          | M 40 x 1          | 82        | 16°        | 3,0 - 32,0   |
| T 229S                   | T42-82-C16M /<br>erw. Durchlass /spindle expansion           |             | 42        | 49          | M 42 x 1          | 82        | 16°        | 30,0 - 36,0  |
| T 248                    | T48-82 / 464.001   | STM38       | 48        | 54          | M 46 x 1          | 82        | 16°        | 2,0 - 38,0   |

Weitere Führungsbüchsentypen, Sonderführungsbüchsen und Sonderprofile kurzfristig lieferbar!  
Further types of guide bushes, special guide bushes and customized profiles quickly available!