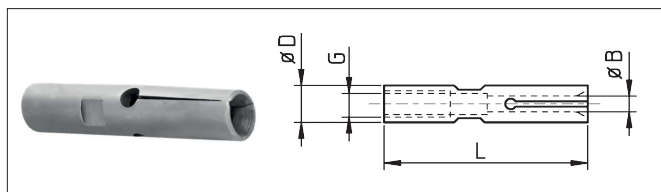
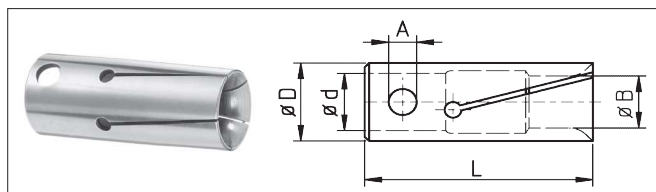


Spannhülse für Lademagazine
FMB, IEMCA, LNS, TRAUB, TORNOSBar feed collet for bar loaders
FMB, IEMCA, LNS, TRAUB, TORNOS

Zeichnung 1 / drawing 1



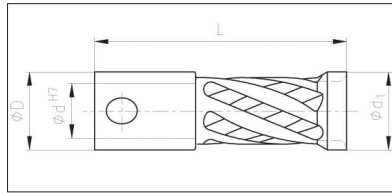
Zeichnung 2 / drawing 2

Bestell-Nr. order-no.	D	Zeichnung drawing	G / d	A	L	B von from	B bis to	
SPH 05	200 E	5	1	M4	-	37	0,8	4,5
SPH 05S		5	2	3,5	1,5	28	1,0	3,5
SPH 07	208 E	7	1	M5	-	37	0,6	6,0
SPH 07S1		7	2	3,5	1,5	28	1,0	5,5
SPH 07S2		7	2	5	3	37	1,0	5,5
SPH 10	210 E	10	2	7	4	40	1,0	9,0
SPH 11		11	2	7	4	40	9,5	10,0
SPH 12	212 E	12	2	8	4	40	1,5	10,5
SPH 13		13	2	8	4	40	2,0	12,0
SPH 14		14	2	8	4	40	8,0	13,0
SPH 15	203 E	15	2	11	6	40	2,0	13,5
SPH 15S1		15	2	7	2	55	3,0	13,0
SPH 15S2		15	2	10	6	55	3,0	13,0
SPH 15S3		15	2	11	6	50	3,0	13,0
SPH 16		16	2	11	6	40	4,0	15,0
SPH 16S		16	2	11	6	65	3,0	14,0
SPH 17		17	2	11	6	55	5,0	15,0
SPH 17S		17	2	7	2	55	13,0	15,0
SPH 18	218 E	18	2	11	6	40	3,0	17,0
SPH 19		19	2	11	6	40	13,0	17,0
SPH 19S1		19	2	10	2	57	3,0	17,0
SPH 19S2		19	2	10	6	57	3,0	17,0
SPH 20	225 E	20	2	14	8	65	2,0	19,0
SPH 20S1		20	2	10	6	56	13,0	17,0
SPH 21		21	2	14	8	65	18,0	20,0
SPH 22		22	2	14	8	65	4,0	21,0
SPH 23		23	2	14	8	65	18,0	22,0
SPH 24		24	2	14	8	65	16,0	23,0
SPH 25	222 E	25	2	20	8	65	2,0	24,0
SPH 25S		25	2	16	8	76	3,0	22,0
SPH 28	227 E	28	2	20	8	65	3,0	27,0
SPH 30		30	2	20	8	65	4,0	29,0
SPH 32		32	2	20	8	65	3,0	31,0
SPH 32S		32	2	16	8	76	23,0	29,0
SPH 34		34	2	20	8	65	28,0	32,0
SPH 34S		34	2	20	8	90	18,0	31,0
SPH 35		35	2	20	8	65	30,0	32,0
SPH 36		36	2	20	8	65	4,0	34,0
SPH 39		39	2	20	8	65	34,0	37,0
SPH 40		40	2	20	8	70	35,0	38,0
SPH 42		42	2	20	8	70	15,0	40,0
SPH 52		52	2	20	8	70	40,0	50,0

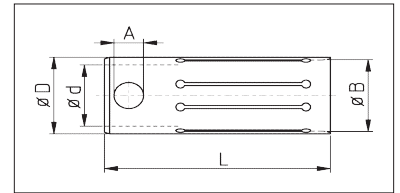
Sechskant und vierkant Profile ab Lager lieferbar, weitere Größen auf Anfrage kurzfristig lieferbar!
Hexagon and square bar feed collets in stock! Further bar feed collets quickly available on request!

Spannhülse „Longlife“
FMB, IEMCA, LNS, TRAUB, TORNOSBar feed collet „Longlife“
FMB, IEMCA, LNS, TRAUB, TORNOS

Typ "L" / type "L"



Typ "L" / type "L"



Typ "LS" / type "LS"

Bestell-Nr. Ausführung	- order-no. - type	D	G / d	A Maß	L	B von from	B bis to	6-kt hex
SPHDL 05		5	M4	--	40	3,5	4,3	
SPHDL 07		7	M5	--	40	4,3	6,0	
SPHDL 075		7,5	M5	--	40	6,0	7,0	
SPHDL 10	SPHDLS 10	10	7	4	40	6,0	9,0	6 - 8
SPHDL 11	SPHDLS 11	11	7	4	40	9,0	10,0	8
SPHDL 12	SPHDLS 12	12	8	4	40	8,0	11,0	7 - 9
SPHDL 13	SPHDLS 13	13	8	4	40	11,0	12,0	10
SPHDL 14	SPHDLS 14	14	8	4	40	11,0	13,0	12
SPHDL 15	SPHDLS 15	15	11	6	40	10,0	14,0	9 - 12
SPHDL 16	SPHDLS 16	16	11	6	40	13,0	15,0	12 - 13
SPHDL 17	SPHDLS 17	17	11	6	40	14,0	16,0	13
SPHDL 18	SPHDLS 18	18	11	6	40	12,0	17,0	11 - 14
SPHDL 19	SPHDLS 19	19	11	6	40	17,0	18,0	15
SPHDL 20	SPHDLS 20	20	14	8	65	14,0	19,0	13 - 16
SPHDL 21	SPHDLS 21	21	14	8	65	18,0	20,0	16 - 17
SPHDL 22	SPHDLS 22	22	14	8	65	16,5	21,0	15 - 18
SPHDL 23	SPHDLS 23	23	14	8	65	18,0	22,0	16 - 19
SPHDL 24	SPHDLS 24	24	14	8	65	20,0	23,0	18 - 20
SPHDL 25	SPHDLS 25	25	20	8	65	16,0	24,0	14 - 20
SPHDL 26	SPHDLS 26	26	20	8	65	23,0	25,0	20 - 21
SPHDL 27	SPHDLS 27	27	20	8	65	24,0	26,0	21 - 22
SPHDL 28	SPHDLS 28	28	20	8	65	20,0	27,0	18 - 23
SPHDL 30	SPHDLS 30	30	20	8	65	22,0	29,0	20 - 25
SPHDL 31	SPHDLS 31	31	20	8	65	29,5	30,0	26
SPHDL 32	SPHDLS 32	32	20	8	65	26,0	31,0	18 - 27
SPHDL 33	SPHDLS 33	33	20	8	65	30,0	32,0	27
SPHDL 34	SPHDLS 34	34	20	8	65	28,0	33,0	25 - 28
SPHDL 36	SPHDLS 36	36	20	8	65	30,0	35,0	27 - 30
SPHDL 39	SPHDLS 39	39	20	8	65	36,0	38,0	32 - 33
SPHDL 42	SPHDLS 42	42	20	8	70	38,5	41,0	34 - 35
SPHDL 52	SPHDLS 52	52	20	8	70	47,0	50,0	41 - 43

Material muss angefast werden!

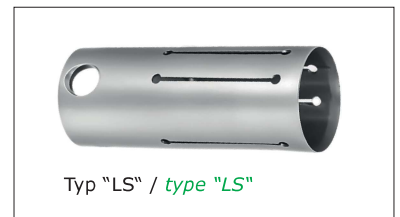
Bars need chamfering to prevent breakage!

Vorteile

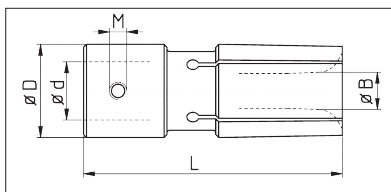
- Die geschlossene Form verhindert Spannkraftverlust bei hohen Drehzahlen
- Bei Ausführung „L“ kann auch 4 / 6 - kt. Material verwendet werden
- Hohe Bruchfestigkeit und Spannkraft bei dünnen Wandungsstärken

Benefits

- closed form prevents tension loss by high rotation speed
- type „L“ also suitable for square / hex material
- High breaking resistance and clamping force



Typ "LS" / type "LS"

Spannhülse für Turbo-Lademagazine
FMB, BREUNING, IRCO, TORNOSBar feed collet for bar loaders
FMB, BREUNING, IRCO, TORNOS

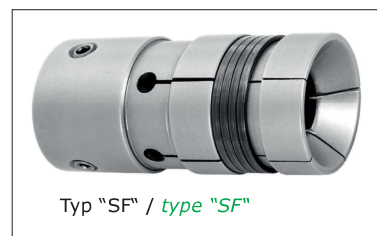
Bestell-Nr. order-no.	D	d	L	M	B von from	B bis to
SPHTS 25	25	20	90	M5	2,5	24,0
SPHTS 28	28	20	90	M5	5,0	26,0
SPHTS 30	30	20	90	M6	3,0	28,0
SPHTS 32	32	20	90	M6	2,5	30,5
SPHTS 33	33	20	90	M6	30,0	31,0
SPHTS 34	34	20	90	M6	6,0	32,5
SPHTS 36	36	20	90	M8	4,0	34,0
SPHTS 38	38	20	90	M8	10,0	36,0
SPHTS 40	40	20	90	M8	7,0	38,5
SPHTS 42	42	20	90	M8	3,0	40,0
SPHTS 44	44	20	90	M8	25,0	42,0
SPHTS 45	45	20	90	M8	10,0	43,0
SPHTS 50	50	20	90	M8	6,0	48,5
SPHTS 54	54	20	90	M8	20,0	51,0
SPHTS 55	55	20	90	M8	20,0	52,0
SPHTS 58	58	20	90	M8	20,0	55,0
SPHTS 60	60	20	90	M8	10,0	58,5
SPHTS 63	63	20	90	M8	10,0	61,5
SPHTS 65	65	20	90	M8	8,0	63,5
SPHTS 70	70	20	90	M8	40,0	68,0
SPHTS 73	73	20/35	90	M8	40,0	71,0
SPHTS 75	75	20/35	90	M8	40,0	73,0
SPHTS 80	80	35	90	M8	40,0	77,0
SPHTS 90	90	35	90	M8	50,0	86,0
SPHTS 100	100	35	110	M8	60,0	95,0

Auch in Ausführung XT lieferbar:
mit definierter Spannkraft

Also available in XT variation:
With defined clamping force

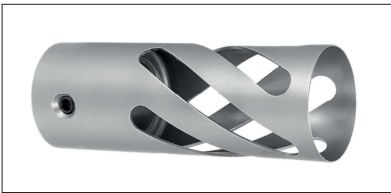
Auch in Ausführung SF lieferbar:
mit Spiralspannfeder für höhere
Spannkraft

Also available in SF variation:
With spiral tension spring to
increase the clamping force



**Weitere TURBO-Spannhülsen, TURBO-Longlifespannhülsen
und Abmessungen auf Anfrage kurzfristig lieferbar!**

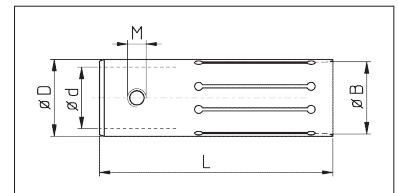
**Further TURBO-bar feed collets and TURBO-LONGLIFE bar feed collets
and bore diameters quickly available on request!**

Spannhülse für Turbo-Lademagazine
FMB, BREUNING, IRCO, TORNOSBar feed collet for bar loaders
FMB, BREUNING, IRCO, TORNOS

Typ "L" / type "L"



Typ "LS" / type "LS"



Typ "LS" / type "LS"

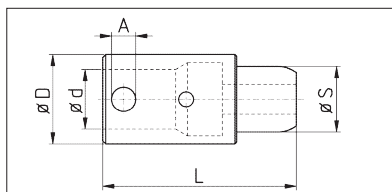
Bestell-Nr. - order-no. Ausführung - type	D	d	L	B von from	B bis to	6-kt hex
SPHTDL 25 SPHTDLS 25	25	20	90	15,0	24,0	13 - 20
SPHTDL 30 SPHTDLS 30	30	20	90	20,0	29,0	18 - 25
SPHTDL 32 SPHTDLS 32	32	20	90	22,0	31,0	19 - 26
SPHTDL 33 SPHTDLS 33	33	20	90	30,0	32,0	26 - 27
SPHTDL 34 SPHTDLS 34	34	20	90	25,0	33,0	22 - 28
SPHTDL 36 SPHTDLS 36	36	20	90	28,0	35,0	25 - 30
SPHTDL 38 SPHTDLS 38	38	20	90	30,0	37,0	27 - 32
SPHTDL 40 SPHTDLS 40	40	20	90	35,0	39,0	31 - 33
SPHTDL 42 SPHTDLS 42	42	20	90	30,0	41,0	27 - 35
SPHTDL 43 SPHTDLS 43	43	20	90	41,5	42,0	36
SPHTDL 44 SPHTDLS 44	44	20	90	36,0	42,0	35 - 37
SPHTDL 45 SPHTDLS 45	45	20	90	40,0	44,0	35 - 38
SPHTDL 50 SPHTDLS 50	50	20	90	40,0	49,0	35 - 42
SPHTDL 55 SPHTDLS 55	55	20	90	45,0	54,0	40 - 46
SPHTDL 60 SPHTDLS 60	60	20	90	50,0	59,0	44 - 51
SPHTDL 63 SPHTDLS 63	63	20	90	50,0	62,0	44 - 53
SPHTDL 65 SPHTDLS 65	65	20	90	53,0	64,0	46 - 55
SPHTDL 70 SPHTDLS 70	70	20	90	65,0	68,0	
SPHTDL 73 SPHTDLS 73	73	20/35	90	68,0	71,0	
SPHTDL 75 SPHTDLS 75	75	20/35	90	70,0	73,0	
SPHTDL 80 SPHTDLS 80	80	35	90	75,0	78,0	

Material muss angefast werden !

Bars need chamfering to prevent breakage!

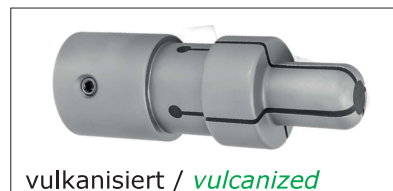
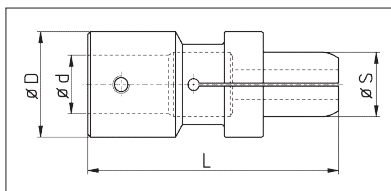
Weitere TURBO-Spannhülsen, TURBO-Longlifespannhülsen
und Abmessungen auf Anfrage kurzfristig lieferbar!

*Further TURBO-bar feed collets and TURBO-LONGLIFE bar feed collets
and bore diameters quickly available on request!*

Spanndorn / Innenspannhülsen für Rohre
FMB, IEMCA, LNS, TRAUB, TORNOSBar feed collet for internal gripping
FMB, IEMCA, LNS, TRAUB, TORNOS

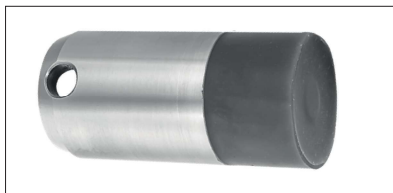
vulkanisiert / vulcanized

Bestell-Nr. order-no.	D	G / d	A	L	S von from	S bis to
SPD 10	10	7	4	40	5,0	9,0
SPD 12	12	8	4	40	5,0	11,0
SPD 15	15	11	6	40	5,0	14,0
SPD 16	16	11	6	40	8,0	15,0
SPD 18	18	11	6	40	5,0	17,0
SPD 20	20	14	8	65	5,0	19,0
SPD 22	22	14	8	65	5,0	21,0
SPD 25	25	20	8	65	5,0	24,0
SPD 28	28	20	8	65	8,0	27,0
SPD 30	30	20	8	65	8,0	29,0
SPD 32	32	20	8	65	6,0	31,0
SPD 36	36	20	8	65	8,00	35,0
SPD 42	42	20	8	65	10,0	41,0
SPD 52	52	20	8	65	10,0	51,0

Spanndorn / Innenspannhülsen für Rohre
FMB, IEMCA, LNS, TRAUB, TORNOSBar feed collet for internal gripping
FMB, IEMCA, LNS, TRAUB, TORNOS

vulkanisiert / vulcanized

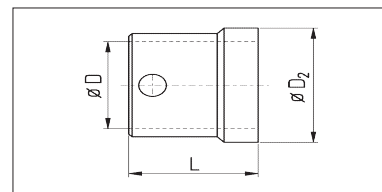
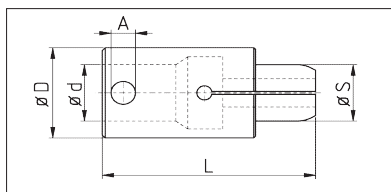
Bestell-Nr. order-no.	D	d	L	Gew	S von from	S bis to
SPDTS 25	25	20	90	M5	5,0	24,0
SPDTS 30	30	20	90	M6	8,0	29,0
SPDTS 32	32	20	90	M6	8,0	31,0
SPDTS 34	34	20	90	M6	28,0	33,0
SPDTS 36	36	20	90	M8	10,0	35,0
SPDTS 38	38	20	90	M8	12,0	37,0
SPDTS 40	40	20	90	M8	15,0	39,0
SPDTS 42	42	20	90	M8	15,0	41,0
SPDTS 45	45	20	90	M8	15,0	44,0
SPDTS 50	50	20	90	M8	20,0	49,0
SPDTS 60	60	20	90	M8	26,0	59,0
SPDTS 65	65	20	90	M8	30,0	64,0
SPDTS 70	70	20	90	M8	30,0	69,0
SPDTS 75	75	20	90	M8	35,0	74,0
SPDTS 80	80	20	90	M8	40,0	79,0
SPDTS 90	90	20	90	M8	50,0	89,0
SPDTS 100	100	20	90	M8	60,0	90,0

Gummi Spannhülsen und Spanndorne
(Rohling)Rubber-Fix bar feed collet
and for internal gripping (Blank)**Vorteile**

- Sehr gute Geräusch- und Schwingungsdämpfung
- Hohe Auszugskräfte
- Auch für 6-kt Material einsetzbar
- Kein Auslaufen des Kühlschmierstoffes mehr
- Großer Spannbereich - ca. 0,5 mm
- Kein ungewolltes Öffnen von Spannsegmenten durch Zentrifugalkräfte
- Kein Zerkratzen empfindlicher Oberflächen
(Schmuck- + Medizintechnik)
- Auch als Notfall-Spannhülsen / Spanndorne
(beliebiges Abdrehen oder Aufbohren auf Wunschmaß)

Benefits

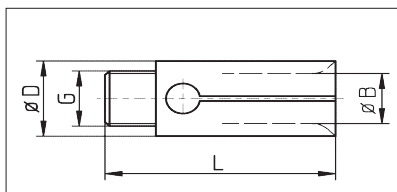
- *Excellent noise and vibration damping*
- *High pull out strength*
- *Also useable for hexagonal material*
- *No more problems with loss of coolant*
- *Larger clamping range, about 0,5 mm*
- *No loss of gripping power with high centrifugal forces*
- *Also available as emergency version for sizing by customer*
- *No scratching of sensitive surfaces (jewelry + medical technology)*

Spanndorn / Innenspannhülsen für Rohre
INDEX MSBar feed collet for internal gripping
INDEX MS

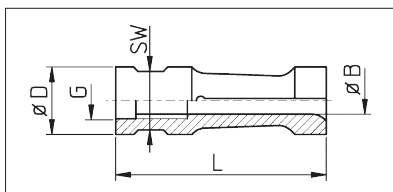
Bestell-Nr. order-no.		Index Orig. Nr.	Schieber feeder	D / D ₂ **	S	A	d	L	Maschine	
D104522 8.0 SP	Spannhülse	<i>collet</i>	927434.1232	12	10,3	8	4	8	45	MS22 / MS40
ASD104522-**	Anschlag	<i>sleeve</i>	927435.**31		13,0 - 23,0	4		32		
D104532 8.0 SP	Spannhülse	<i>collet</i>	927535.1231	12	10,3	8	4	8	45	MS32
ASD104532-**	Anschlag	<i>sleeve</i>	927536.**31		13,0 - 18,0	4		32		
D104640 8.0 SP	Spannhülse	<i>collet</i>	927434.1233	12	10,3	8	4	8	46	MS22 / MS32 / MS40
ASD104640-**	Anschlag	<i>sleeve</i>	927435.**32		13,0 - 23,0	4		26		
D164522 15.0 SP	Spannhülse	<i>collet</i>	927535.1831	18	16	15	6	11	45	MS22 / MS32 / MS40
ASD164522-**	Anschlag	<i>sleeve</i>	927536.**31		19,0 - 25,0	6		32		
D164632 15.0 SP	Spannhülse	<i>collet</i>	927535.1841	18	16	15	6	11	46,5	MS22 / MS32 / MS40
ASD164632-**	Anschlag	<i>sleeve</i>	927536.**41		19,0 - 25,0	6		26,5		
D184552 15.0 SP	Spannhülse	<i>collet</i>	927934.1832	18	18	15	6	11	45	MS52
ASD184552-**	Anschlag	<i>sleeve</i>	927975.**31		22,0 - 32,0			20		
D197040 15.0 SP	Spannhülse	<i>collet</i>	927434.2332	23	19	15	8	14	70	MS40
ASD197040-**	Anschlag	<i>sleeve</i>	927435.**31		24,0 - 32,0	8		52		
D196640 15.0 SP	Spannhülse	<i>collet</i>	927434.2333	23	19	15	8	14	66,5	MS40
ASD196640-**	Anschlag	<i>sleeve</i>	927435.**32		24,0 - 32,0			46,5		
D226632 15.0 SP	Spannhülse	<i>collet</i>	927535.2531	25	22	15	8	15	66	MS32
ASD226632-**	Anschlag	<i>sleeve</i>	927536.**31		26,0 - 36,0			46,5		
D277040 15.0 SP	Spannhülse	<i>collet</i>	927434.3232	32	27	15	8	20	70	MS40
ASD277040-**	Anschlag	<i>sleeve</i>	927435.**31		33,0 - 40,0	8		52		
D276140 15.0 SP	Spannhülse	<i>collet</i>	927434.3233	32	27	15	8	20	61	MS40
ASD276140-**	Anschlag	<i>sleeve</i>	927435.**32		33,0 - 40,0			41		
D327052 20.0 SP	Spannhülse	<i>collet</i>	927934.3232	32	32	20	8	20	70	MS52
ASD327052-**	Anschlag	<i>sleeve</i>	927975.**31		33,0 - 42,0			38		
D427052 20.0 SP	Spannhülse	<i>collet</i>	927934.4232	42	42	20	8	20	70	MS52
ASD427052-**	Anschlag	<i>sleeve</i>	927975.**31		43,0 - 52,0			38		
D1845IMS52 15.0 SP	Spannhülse	<i>collet</i>		18	18	15	6	11	45	
D3270IMS52 20.0 SP	Spannhülse	<i>collet</i>		32	32	20	8	20	70	
D4270IMS52 20.0 SP	Spannhülse	<i>collet</i>		42	42	20	8	20	70	

Spannhülse für Lademagazine
IEMCA mit Aufschraubgewinde

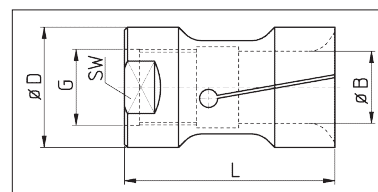
Bar feed collet for bar loaders
IEMCA with thread



Zeichnung 1 / drawing 1



Zeichnung 2 / drawing 2



Zeichnung 3 / drawing 3

Bestell-Nr. order-no.	D	Zeichnung drawing	G	L	SW	B von from	B bis to
SPHI 045	4,5	1	M3x0,5	31	-	1,0	3,0
SPHI 07	7,5	2	M5x0,5	40	6	1,5	6,5
SPHI 10	10	2	M6x0,75	40	8	1,5	9,0
SPHI 12	12	2	M7x0,75	42	10	1,6	10,5
SPHI 15	15	2	M8x1	42	13	3,0	13,0
SPHI 16	16	2	M8x1	42	14	6,0	15,0
SPHI 18	18	2	M8x1	42	15	11,0	16,5
SPHI 20	20	2	M10x1	59	17	2,5	18,5
SPHI 23	23	2	M10x1	59	19	11,0	21,0
SPHI 25	25	2	M10x1	59	22	8,0	23,0
SPHI 27	27	2	M10x1	59	24	16,0	25,5
SPHI 30	30	2	M10x1 *	65	27	6,0	28,0
SPHI 31 **	31	2	M10x1 *	65	27	8,0	29,0
SPHI 32	32	2	M10x1 *	65	30	6,0	30,0
SPHI 33	33	2	M10x1 *	65	30	8,0	32,0
SPHI 34	34	2	M25x1,5	65	32	5,0	32,0
SPHI 35	35	2	M25x1,5	65	32	19,0	33,0
SPHI 36	36	3	M25x1,5	65	34	20,0	34,0
SPHI 40	40	3	M25x1,5	70	36	10,0	37,0
SPHI 42	42	3	M25x1,5	70	36	20,0	40,0
SPHI 45	45	3	M25x1,5	72	41	20,0	43,0
SPHI 46	46	3	M25x1,5	72	40	20,0	44,0
SPHI 50	50	3	M25x1,5	80	46	43,0	48,0
SPHI 52	52	3	M25x1,5	80	46	45,0	50,0
SPHI 54	54	3	M25x1,5	80	50	47,0	52,0
SPHI 55	55	3	M25x1,5	80	50	20,0	54,0
SPHI 56	56	3	M25x1,5	80	50	20,0	54,0
SPHI 58	58	3	M25x1,5	80	50	20,0	54,0
SPHI 60	60	3	M25x1,5	80	55	20,0	57,0
SPHI 65	65	3	M25x1,5	80	60	56,0	63,0
SPHI 70	70	3	M25x1,5	80	65	60,0	68,0
SPHI 75	75	3	M25x1,5	80	65	67,0	72,0
SPHI 80	80	-	M25x1,5	80	Quer- bohrungen cross holes	50,0	77,0

* Auch mit folgenden Gewinden lieferbar: **M17x1 ; M25x1,5 ; M18x1,5 ; M18x1,5L**

* Also available with threads:

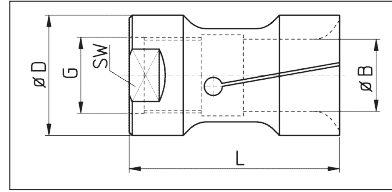
** auch für Stama-Magazine

** Also for Stama loaders

Dünnwandige Spannhülsen auch als "Longlife" lieferbar
Thin-walled bar feed collets also available in "Longlife"-type

Auch als Spanndorn lieferbar
Also available for internal gripping

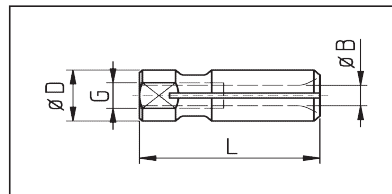
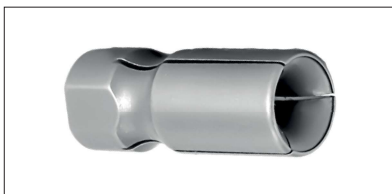


Spannhülse für Lademagazine
IEMCA mit AufschraubgewindeBar feed collet for bar loaders
IEMCA with right hand thread

Bestell-Nr. order-no.	D	G	L	SW	B von from	B bis to
SPHIL 29	29	M17x1	80	27	5,0	27,0
SPHIL 30	30	M17x1	80	27	5,0	28,0
SPHIL 32	32	M25x1,5	80	30	5,0	30,0
SPHIL 34	34	M25x1,5	80	30	20,0	32,0
SPHIL 36	36	M25x1,5	80	30	20,0	34,0
SPHIL 38	38	M25x1,5	80	36	20,0	36,0
SPHIL 40	40	M25x1,5	80	36	10,0	38,0
SPHIL 42	42	M25x1,5	80	36	10,0	40,0
SPHIL 44	44	M25x1,5	80	41	38,0	42,0
SPHIL 46	46	M25x1,5	80	41	39,0	44,0
SPHIL 48	48	M25x1,5	80	46	40,0	46,0

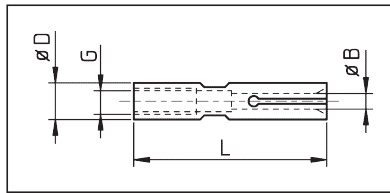
Dünnwandige Spannhülsen auch als "Longlife" lieferbar
Thin-walled bar feed collets also available in "Longlife"-type

Auch mit Linksgewinde erhältlich
Also available with Left-hand Thread

Spannhülse für Lademagazine
BECHLER, LNS, TRAUB, TORNOSBar feed collet for bar loaders
BECHLER, LNS, TRAUB, TORNOS

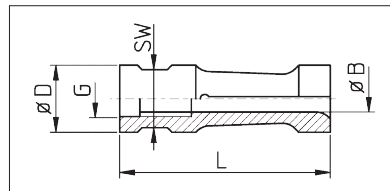
Bestell-Nr. order-no.	D	G	L	B von from	B bis to
SPHB 07	7	M4	22	1,0	6,3
SPHB 10	10	M5	26	1,5	8,5

Dünnwandige Spannhülsen auch als "Longlife" lieferbar
Thin-walled bar feed collets also available in "Longlife"-type

Spannhülse für Lademagazine
BECHLER, LNS, TRAUB, TORNOSBar feed collet for bar loaders
BECHLER, LNS, TRAUB, TORNOS

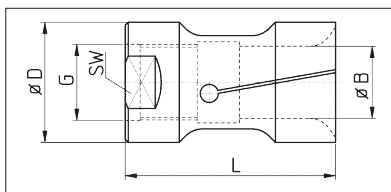
Bestell-Nr. order-no.	D	G	L	B von from	B bis to
SPHLNS 06	6	M4	30	0,6	5,0
SPHLNS 07	7	M4	30	1,0	6,0
SPHLNS 10	10	M5	30	1,5	8,5
SPHLNS 12	12	M6	30	2,0	11,0
SPHLNS 125	12,5	M6	30	8,0	11,5
SPHLNS 165	16,5	M8	35	4,0	14,5
SPHLNS 20	20	M10	35	4,0	18,0

Dünnwandige Spannhülsen auch als "Longlife" lieferbar
Thin-walled bar feed collets also available in "Longlife"-type

Spannhülse für Lademagazine
CUCCHI mit Aufschraubgewinde rechtsBar feed collet for bar loaders
CUCCHI with right hand thread

Bestell-Nr. order-no.	D	G	L	SW	B von from	B bis to
SPHC10	10	M6x0,75	50	8	2,0	9,0
SPHC12	12	M7x0,75	52	10	3,0	11,0
SPHC14	14	M8x1	52	12	4,0	12,5
SPHC15	15	M8x1	52	13	4,0	14,0
SPHC16	16	M8x1	52	14	4,0	15,0
SPHC18	18	M10x1	59	14	4,0	17,0
SPHC25	25	M14x1	59	22	10,0	23,0
SPHC30	30	M18x1,5 re	65	28	8,0	28,0

Dünnwandige Spannhülsen auch als "Longlife" lieferbar
Thin-walled bar feed collets also available in "Longlife"-type

Spannhülse für Lademagazine
CUCCHI mit Aufschraubgewinde LINKSBar feed collet for bar loaders
CUCCHI with left hand thread

Bestell-Nr. order-no.	Magazin magazine	D	G	L	SW	B von from	B bis to
SPHCU19	CUCCHI PB20	19	M10x1 L	60	17	4,0	17,0
SPHCU20	CUCCHI PB20	20	M10x1 L	60	17	8,0	18,5
SPHCU23	CUCCHI PB23	23	M14x1 L	60	21	4,0	21,0
SPHCU24	CUCCHI PB24	24	M14x1 L	60	22	21,0	22,0
SPHCU25	CUCCHI PB24	25	M14x1 L	60	22	6,0	23,5
SPHCU28	CUCCHI PB28	28	M18x1,5 L	65	25	5,0	26,0
SPHCU29	CUCCHI PB30	29	M18x1,5 L	65	27	5,0	27,5
SPHCU30	CUCCHI PB30	30	M18x1,5 L	65	28	18,0	28,0
SPHCU32	CUCCHI PB32	32	M18x1,5 L	65	28	20,0	30,0
SPHCU33	CUCCHI PB35A	33	M18x1,5 L	70	30	25,0	31,0
SPHCU34	CUCCHI PB35A	34	M18x1,5 L	70	32	8,0	32,5
SPHCU35	CUCCHI PB35	35	M18x1,5 L	70	32	10,0	33,0
SPHCU37	CUCCHI PB38	37	M25x1,5 L	70	34	10,0	35,0
SPHCU38	CUCCHI PB38	37,8	M25x1,5 L	70	34	30,0	36,0
SPHCU39	CUCCHI PB38	39	M25x1,5 L	70	36	16,0	37,0
SPHCU40	CUCCHI PB42	39,8	M25x1,5 L	70	36	20,0	38,0
SPHCU41	CUCCHI PB42	41	M25x1,5 L	70	36	19,0	40,0
SPHCU42	CUCCHI PB42	42	M25x1,5 L	70	36	20,0	40,0
SPHCU43	CUCCHI PB42	42,8	M25x1,5 L	70	36	20,0	41,0
SPHCU44	CUCCHI PB42	44	M25x1,5 L	70	36	20,0	42,0
SPHCU47	CUCCHI PB48	47	M30x1,5 L	70	40	10,0	45,0
SPHCU50	CUCCHI PB	49,7	M30x1,5 L	70	46	20,0	48,0
SPHCU55	CUCCHI PB	55	M30x1,5 L	80	50	20,0	53,0
SPHCU60	CUCCHI PB60	59 (59,7)	M30x1,5 L	80	55	19,0	58,0
SPHCU65	CUCCHI PB68	65	M30x1,5 L	80	60	58,0	62,0
SPHCU70	CUCCHI PB70-72	69,5	M30x1,5 L	80	Nut	60,0	67,0
SPHCU75	CUCCHI PB75	75	M30x1,5 L	80	Nut	65,0	72,0
SPHCU88	CUCCHI PB90	88	Bohrung / bore 40	110	--	60,0	82,0
DV34		34	M25x1,5 L	70	30	10,0	33,0

Dünnwandige Spannhülsen auch als "Longlife" lieferbar
Thin-walled bar feed collets also available in "Longlife"-type

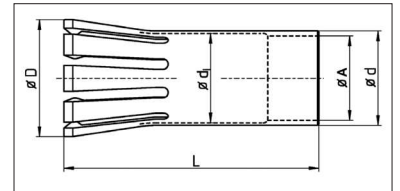
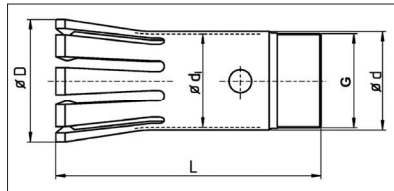
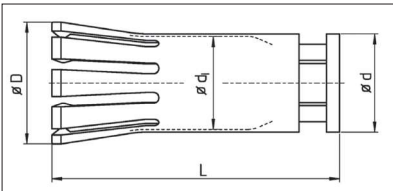
Schiebehülse für Lademagazine
CUCCHISliding sleeve for bar loaders
CUCCHI

Bild 1 / Picture 1

Bild 2 / Picture 2

Bild 3 / Picture 3

Bestell-Nr. order-no.	D	d	d1	L	Lader Feeder	Bild picture
SH PB35	45,4	36,7	34,7	110	PB35	1
SH PB42	51	42,7	40,7	114	PB42	1
SH PB42B	49,5	42,7	41,2	115	PB42	1
SH PB50	61,7	52,6	50,3	299	PB50	1

Bestell-Nr. für Halteklammer order-no. for retaining clip	Lader Feeder
SHK 35	PB35
SHK 42	PB42
SHK 50	PB50

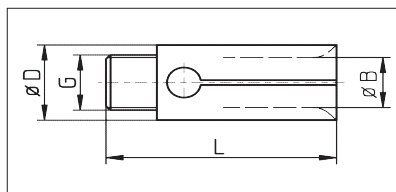
Bestell-Nr. order-no.	D	d	d1	L	G	Lader Feeder	Bild picture
SH PB30A	41	31,8	29,4	97	M30x1	PB30	2
SH PB35A	45	36,7	34,7	100	M35x0,75	PB35	2
SH PB38A	49	40,7	38,4	107,7	M38x1,25	PB38	2
SH PB52A	62,6	52,2	48,4	113	M49,5x1,25	PB52A	2

Bestell-Nr. order-no.	D	d	d1	L	A*	Lader Feeder	Bild picture
SH PB35G	45,2	36,8	34,5	101	29-32,8	PB35	3
SH PB35K	45,2	36,8	34,8	80	32,8	PB35	3
SH PB42G						PB42	3
SH PB50G	61,7	52,6	50,3	299	44-60,3	PB50	3

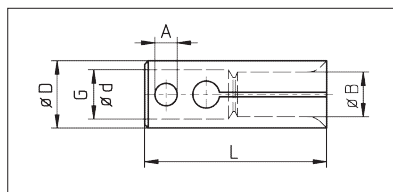
* Effektivmaße bei Bestellung angeben
* Specify actual size when ordering

Spannhülse für Lademagazine CAV

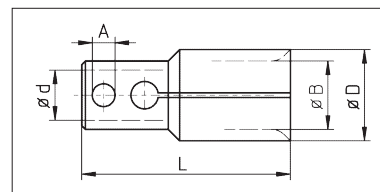
Bar feed collet for bar loaders CAV



Zeichnung 1 / drawing 1



Zeichnung 2 / drawing 2



Zeichnung 3 / drawing 3

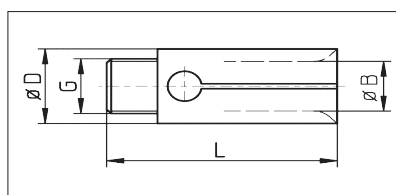
Bestell-Nr. order-no.	D	G	L	A	B von from	B bis to	Zeichnung Drawing	Magazin Magazine.
SPHCAV 07	7	M6 x 1 LH	40	--	1,5	5,9	1	CAV16/20L-IS
SPHCAV 10	10	M6 x 1 LH	40	--	2	8,5	1	CAV12M-IS
SPHCAV 12	12	M6 x 1 LH	40	--	8,5	10,5	1	
SPHCAV 15	15	10	55	6	3	14	2	CAV16/20L-IS
SPHCAV 17	17	10	55	6	14	16	2	
SPHCAV 19	19	10	56,5	6	16	17	2	CAV20L-IS
SPHCAV 21	21	10	56,5	6	17	19	2	
SPHCAV 25	25	16	76	8	5	22	3	
SPHCAV 32	32	16	76	8	15,5	29	3	
SPHCAV 34	34	16	76	8	19	31	3	

Dünnwandige Spannhülsen auch als "Longlife" auf Anfrage lieferbar
Thin-walled bar feed collets available in "Longlife"-type on request



Spannhülse mit Aussengewinde

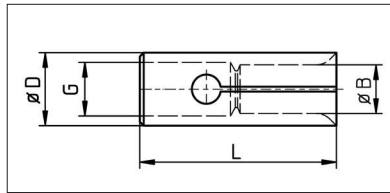
Bar feed collet with external thread



Bestell-Nr. order-no.	D	G	L	B von from	B bis to
SPHAG 055	5,5	M3	31	1,0	4,0
SPHAG 08	8,0	M6 x 1	40	1,0	6,0
SPHAG 115	11,5	M6 x 1	40	6,0	10,0
SPHAG 15	15,0	M6 x 1 LH	40	3,0	13,0

Spannhülse für Lademagazine
FedekBar feed collet for bar loaders
Fedek

Darstellung kann vom Original abweichen!
Picture could vary from original product!

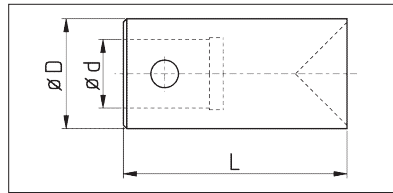
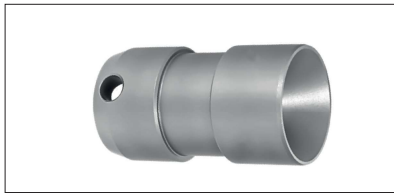


Darstellung kann vom Original abweichen!
Drawing could vary from original product!

Bestell-Nr. order-no.	D	L	Gewinde Thread	B von from	B bis to	Bestell-Nr. order-no.	D	L	Gewinde Thread	B von from	B bis to
SPHF05	5,15	37	M4x0,7	1	3,5	SPHF095L	9,5	45	M5x0,8 LH	1	7,5
SPHF085	8,5	30	M5x0,8	1	7	SPHF10L-5	10	50	M5x0,8 LH	1	8
SPHF080	8,0	50	M4x0,7	1	6	SPHF10L-6	10	46	M6x1 LH	1	8
SPHF09	9	40	M6x0,75	1	7	SPHF12L-5	12	45	M5x0,8 LH	1	10
SPHF09-5	9,5	45	M5x0,8	1	8	SPHF12L-6	12	40	M6x1 LH	1	10
SPHF10-5	10	50	M5x0,8	1	8	SPHF13L-5	13	50	M5x0,8 LH	1	11
SPHF10-6	10	42	M6x0,75	1	8	SPHF13L-8	13	60	M8x1 LH	1	11
SPHF14	14	42	M8x1	3	12	SPHF14L	14	42	M7x0,75 LH	3	12
SPHF15-5	15	40	M5x0,5	3	13	SPHF15L-8	15	16	M8x1 LH	3	13
SPHF15-8	15	42	M8x1	3	13	SPHF15L-9	15	50	M9x1 LH	3	13
SPHF15-8	15	60	M8x1	3	13	SPHF15L-10	15	73	M10x1 LH	3	13
SPHF15-10	15	60	M10x1	3	13	SPHF15L-12	15	85	M12x1 LH	3	13
SPHF16	16	42	M8x1	12	14	SPHF16L-9	16	58	M9x1 LH	3	14
SPHF18	18	59	M10x1	13	16	SPHF16L-10	16	73	M10x1 LH	3	14
SPHF19-8	19	40	M8x1	13	17	SPHF18LK-9	18	42	M9x1 LH	6	16
SPHF19-10	19	59	M10x1	12	17	SPHF18L-9	18	60	M9x1 LH	13	16
SPHF20-9	20	59	M9x1	13	17	SPHF18L-10	18	59	M10x1 LH	13	16
SPHF20-10	20	60	M10x1	13	17	SPHF19L-8	19	50	M8x0,8 LH	13	17
SPHF20K	20	42	M10x1	8	17	SPHF19L-9	19	60	M9x1 LH	13	17
SPHF22	22	59	M10x1	18	20	SPHF20L-9	20	59	M9x1 LH	13	18
SPHF23	23	59	M10x1	18	21	SPHF20L-10	20	60	M10x1 LH	13	18
SPHF25-10	25	59	M10x1	18	23	SPHF22L	22	59	M9x1 LH	18	20
SPHF25-17	25	60	M17x1	13	23	SPHF23L	23	60	M9x1 LH	18	21
SPHF265	26,5	65	M17x1	15	23	SPHF24L	24	60	M9x1 LH	18	22
SPHF27	27	65	M10x1	15	25	SPHF25L-9	25	60	M9x1 LH	18	23
SPHF30-10	30	65	M10x1	25	28	SPHF25L-10	25	59	M10x1 LH	18	23
SPHF30-18	30	65	M18x1,5	18	28	SPHF27L-9	27	59	M9x1 LH	15	25
SPHF32	32	80	M25x1,5	20	30	SPHF27L-10	27	65	M10x1 LH	15	25
SPHF35	35	80	M25x1,5	30	33	SPHF29L	29	65	M18x1,5 LH	17	27
SPHF36	36	100	M30x1,5	24	34	SPHF30L-10	30	65	M10x1 LH	17	27
SPHF40	40	80	M25x1,5	33	38	SPHF30L-18	30	65	M18x1,5 LH	18	28
SPHF46	46	80	M25x1,5	38	44	SPHF32L-17	32	70	M17x1 LH	20	30
						SPHF32L-25	32	80	M25x1,5 LH	20	30
						SPHF35L	35	80	M25x1,5 LH	30	33
						SPHF42L-25	42	90	M25x1,5 LH	30	40
						SPHF42LK-25	42	80	M25x1,5 LH	33	40
						SPHF42L-32	42	90	M32x1,5 LH	30	39
						SPHF44L	44	80	M25x1,5 LH	40	42
						SPHF46L	46	80	M25x1,5 LH	42	44

Zentrierhülsen für Lademagazine

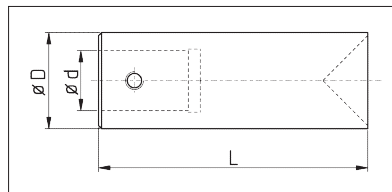
Bar feed cone collet for bar loaders



Bestell-Nr. order-no.	D	d	L
SPH10K	10	7	40
SPH12K	12	8	40
SPH15K	15	11	40
SPH18K	18	11	40
SPH20K	20	14	65
SPH22K	22	14	65
SPH25K	25	20	65
SPH28K	28	20	65
SPH30K	30	20	65
SPH32K	32	20	65
SPH36K	36	20	65

Zentrierhülsen für Lademagazine

Bar feed cone collet for bar loaders



Bestell-Nr. order-no.	D	d	L
SPH25K	25	20	90
SPH30K	30	20	90
SPH32K	32	20	90
SPH34K	34	20	90
SPH36K	36	20	90
SPH40K	40	20	90
SPH42K	42	20	90
SPH45K	45	20	90
SPH50K	50	20	90
SPH60K	60	20	90
SPH65K	65	20	90
SPH67K	67	20	90