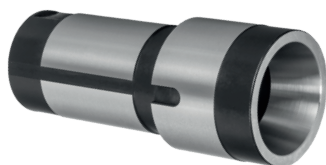


Druckhülsen und Spannmittel
Collet Sleeves and clamping tools

Hauptspindel - *Main-Spindle*

Druckhülse - Bestell-Nr. collet sleeve - order-no.	f. britsch	Spannzange Collet	f. britsch	Führungsbüchse Guide Bush
Standard <i>Standard</i>				
64030 / OT3-53-010		E 145 F25 76-64		T223 / 22.001 / B261
64037 / VOT3-53-010 (verstiftet 3 mm am Konus / <i>pinned 3 mm in Cone</i>)		E 145 F25 76-64 (Nut 3 mm im Konus / <i>Slot 3 mm in Cone</i>)		T223 / 22.001 / B261
Erweiterung <i>Expansion</i>				
64001 / SET-SR20R4/A/F27		E 147 F27 76-22		T223S M27x1
54020 (verstiftet 3 mm am Konus / <i>pinned 3 mm in Cone</i>)		E 147 F27 76-22 (Nut 3 mm im Konus / <i>Slot 3 mm in Cone</i>)		T223S M27x1
Reduzierung <i>Reduction</i>				
64070 / STAR-SR20R4/A/F15v15 (15 mm verlängert / <i>15 mm extended</i>)		E 120 F15 76-580		T223 / 22.001 / B261
64072 / OT3-51		E 138 F20 76-87		T223 / 22.001 / B261
63089		E 145 F25 76-64		F853 / 166.001 / B212A

Gegenspindel - *Sub-Spindle*

Druckhülse - Bestell-Nr. collet sleeve - order-no.	f. britsch	Spannzange Collet	-
Standard <i>Standard</i>			
41008 / 573-72-010		E 145 F25 76-64	-
41058 / V573-72-010 (verstiftet 3 mm am Konus / <i>pinned 3 mm in Cone</i>)		E 145 F25 76-64 (Nut 3 mm im Konus / <i>Slot 3 mm in Cone</i>)	-
Reduzierung <i>Reduction</i>			
		ACHTUNG! Auswerfer muss eventuell angepasst werden! ATTENTION! In case of using a sleeve reduction, it is urgent to fit your ejector!	
63087		E 109 F10 76-86	-
63080 / STAR-ECAS20/B/F27		E 120 F15 76-580	-
Erweiterung <i>Expansion</i>			
41031		E 147 F27 76-22	-
59063 (verstiftet 3 mm am Konus / <i>pinned 3 mm in Cone</i>)		E 147 F27 76-22 (Nut 3 mm im Konus / <i>Slot 3 mm in Cone</i>)	-

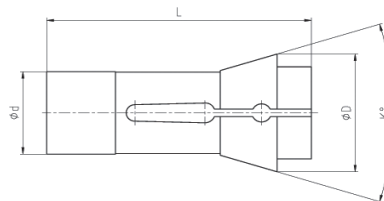
Weitere Ausführungen auf Anfrage lieferbar
Further Types available on request

Sie dürfen uns im Zweifelsfall jederzeit kontaktieren.
Wir beraten Sie gerne bezüglich Ihrer Spannmittel für Ihre  Maschine

*Please do not hesitate to contact us
if you have any questions regarding your clamping tools for your  machine.*

Druckspannzangen Reihe 100

Dead Length Collets Series 100 / F-Type

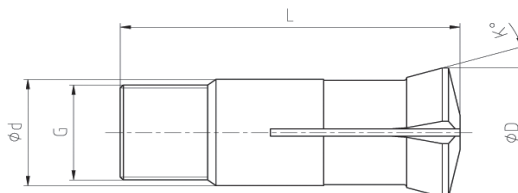
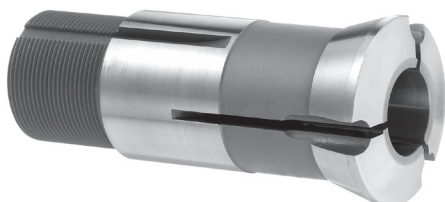


Bestell-Nr. order-no.	F-Nummer F-Number	US-Code	Ø d	Ø D	L	K	Maximale Bohrung in mm Maximum Bore in mm		
							Ø	6-kt	4-kt
109 E	F10 76-86	TF 10	10	15,5	47,5	40°	8,0	7,0	5,5
120 E	F15 76-580	TF 15	15	21	64	32°	13,0	11,0	9,0
EF16 / 1212E	F16 76-1076	TF 16	16	21	64	32°	13,0	10,0	8,0
138 E	F20 76-87	TF 20	20	28	67	32°	16,0	14,0	11,0
145 E Standard	F25 76-64	TF 25	25	35	77	32°	21,0	17,0	14,0
147 E	F27 76-22	TF 27	27	38	72,7	30°	23,0	20,0	16,0
EF37 / 1536E	F37 76-740	TF 37	37	47	92	32°	32,0	27,0	22,0
EF40	F40	EF 40	40	47	92	32°	36,0	-	-
171 E	F42 76-99		42	55	94	30°	37,0	32,0	26,0
173 E	F48 76-81	TF 48	48	60	94	30°	42,0	38,0	30,0

Weitere Spannzangentypen, Sonderdruckspannzangen und Sonderprofile auch mit Vorbau kurzfristig lieferbar!
Further types of Collets, special Collets with customized Profiles also with extended nose quickly available!

Verstellbare Führungsbüchsen mit Hartmetall Einsatz

Adjustable Guide bushes with carbide insert



Bestell-Nr. order-no.	Schweizer Code Swiss Code	US-Code	Ø d	Ø D	Gewinde Thread	L	K	Maximale Bohrung in mm Maximum Bore in mm
I 353	T16-59 / 8.001 / J6R	TD10	16	20,5	M 14 x 1	59	16°	1,0 - 12,0
F 853	T18-59-M16.1 / 166.001 / B212A		18	21,8	M 16 x 1	59	30°	1,0 - 13,0
F 391	T22-68-M22.1 / 39.001 / J7AR	TD20R	22	29	M 22 x 1	68	16°	3,0 - 18,0
T 223 Standard	T28-82-M25.1 / 22.001 / B261	TD25S	28	34	M 25 x 1	82	16°	3,0 - 21,0
T 223S	T28-82-M27.1 / 22.010 / erw. Durchlass /spindle expansion		28	34	M 27 x 1	82	16°	21,0 - 23,0
T 229	T42-82-C16 / 28.001 / J9	TD32S	42	49	M 40 x 1	82	16°	3,0 - 32,0
T 229S	T42-82-C16M / erw. Durchlass /spindle expansion		42	49	M 42 x 1	82	16°	30,0 - 36,0
T 248	T48-82 / 464.001	STM38	48	54	M 46 x 1	82	16°	2,0 - 38,0

Weitere Führungsbüchsentypen, Sonderführungsbüchsen und Sonderprofile kurzfristig lieferbar!
Further types of guide bushes, special guide bushes and customized profiles quickly available!